

L series

Remote Laser Methane Detector

L10 portable remote laser methane detector

L20 portable remote laser methane detector

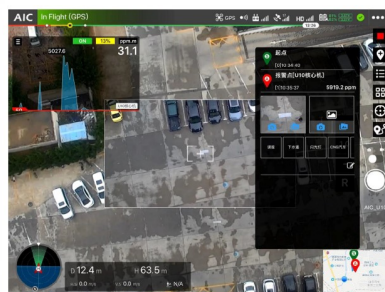
The protection level of the whole series reaches **IP68**. Similar to the appearance of flashlight, it is easy to hold and use for a long time. It practices the concept of reliable tools in the hands of inspectors and emphasizes the perfect combination of ergonomics and high performance.

Equipped with auxiliary sight to accurately locate the target under strong light. Multi-functional bracket and grip, convenient for high-rise detection and carrying electric vehicle, tripod and other accessories.

The endurance of L series remote measuring instrument can reach more than **12** hours. The fully integrated intelligent battery technology of charge and discharge management can adapt to the ambient temperature and ensure the whole day's work in cold climate.

Supports the inspection APP. The **Alpha One** intelligent inspection system is easy to operate and powerful. It records the inspection path and alarm time in real time and automatically generates inspection reports. It supports Apple's Android system and can connect to the cloud information platform.

L20



L series

Remote Laser Methane Detector

L10 portable remote laser methane detector

L20 portable remote laser methane detector

much lighter, 25% weight reduction
can be put into the pocket

It is still powerful, with a detection distance of 100 meters, meeting most inspection environments, intelligent algorithms to prevent false positives, Bluetooth connection to APP, and advanced battery management technology, all of which are indispensable.

All-metal CNC machine body, protection level up to IP68, corrosion resistance and drop resistance

Easier to use, only one button, without the setting and status, just put this "flashlight" to the inspection target

L10



Item:	L10	L20
Measure Principle	Laser Absorption Spectroscopy	Laser Absorption Spectroscopy
Static Detection Limitation	5ppm.m	5ppm.m
Respond Time	0.1s	0.1s
Sample Frequency	100KHz	100KHz
Measure Range	0-100,000ppm-m	0-100,000ppm-m
Maximum Detection Distance	100m	150m
Battery	Li-ion, 8 hours	Li-ion, 12 hours
Software	Alpha One	Alpha One
Detection Object	Methane (CH4)	Methane (CH4)
Laser for Detection	Class I, eyesafe laser	Class I, eyesafe laser
Laser for Indicator	Class IIIR, no direct vision or viewing	Class IIIR, no direct vision or viewing
Protection Level	IP68	IP68
Explosion Proof	Exib IIA T4 Gb	Exib IIA T4 Gb
Operation Temperature	-20~50 degree	-20~50 degree
Operation Humidity	<90%RH, no condensation	<90%RH, no condensation
Size	170x52x52mm	225x70x100mm
Weight	0.38 kg	0.5 kg